



# EXPLORE WHAT BREC HAS TO OFFER

HIGHLAND ROAD PARK OBSERVATORY



# 6568

## PARK ACRES

175 PARKS : 56 REC CENTERS

122 PLAYGROUNDS

73.4 MILES OF PARK TRAILS

9.75 MILES OF GREENWAYS

4.8 MILES OF NATURE TRAILS

24.9 MILES OF PRIMITIVE TRAILS

4 COMMUNITY GARDENS

3 NATIVE POLLINATOR GARDENS

33 INDOOR BASKETBALL COURTS

149 BASKETBALL HALF-COURTS

80 BASKETBALL FULL-COURTS

1 CRICKET PITCH

5 TENNIS CENTERS : 135 TENNIS COURTS

51 VOLLEYBALL COURTS

247 ATHLETIC FIELDS : 3 STADIUMS

5 GOLF COURSES : 3 DRIVING RANGES

2 ARCHERY RANGES : 4 DISC GOLF COURSES

4 FITNESS CENTERS : 21 OUTDOOR FITNESS STATIONS

3 BOCCE BALL COURTS : 1 CROQUET COURT

BATON ROUGE GALLERY



NORTH 14TH STREET BOXING CENTER

INDEPENDENCE BOTANICAL GARDEN



LAURENS HENRY COHN, SR MEMORIAL PLANT ARBORETUM

4 SWIMMING POOLS

8 SPLASH PADS

16 FISHING LAKES

2 BLUEWAY TRAILHEADS

5 CANOE/KAYAK LAUNCHES

LIBERTY LAGOON {AQUATICS CENTER} : 1 SURFING SIMULATOR : 5 THRILL SLIDES

MAGNOLIA MOUND

EXTREME SPORTS PARK AT PERKINS ROAD COMMUNITY PARK

BLUEBONNET SWAMP NATURE CENTER

BATON ROUGE ZOO

JEAN LAFITTE AIR GUN RANGE

FARR PARK EQUESTRIAN CENTER

INDEPENDENCE PARK THEATRE + CULTURAL CENTER

3,350 ACRES OF CONSERVATION LAND : 6 CONSERVATION AREAS

8 NATURE RESERVES

79 PICKLEBALL COURTS

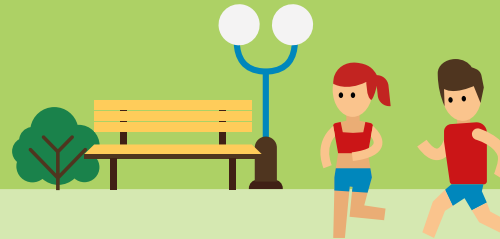
6 DOG PARKS

# The Economic Benefits of BREC Parks

BREC saw over **1.7 million visitors** to its staffed parks and facilities in 2022. 8.5% of those visitors were from outside the Baton Rouge metro area.



BREC parks **raise the value of nearby homes by \$20.8 million**, increasing local property tax revenues by **\$1.7 million annually**.

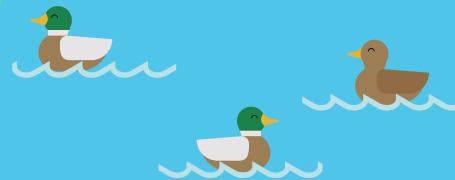


Physical activity in BREC parks reduces healthcare costs. Residents who use BREC parks for recommended exercise levels save a total of over **\$8 million in annual healthcare costs**.

BREC parks and trails provide nearly **\$279.5 million in recreation benefits** to East Baton Rouge Parish residents each year.



BREC generates **over \$26 million each year** in economic impact by attracting tourists from outside the Baton Rouge metro area to its parks and facilities.



Parks and green space managed by BREC reduce flooding impact to local homes and businesses. The avoided cost of stormwater management is worth at least **\$2.9 million annually**.